



MONTHLY MEMBERSHIP PROGRESS REPORT

District 318 E

Results as of: 06/30/2018

GMT: N S SANKAR

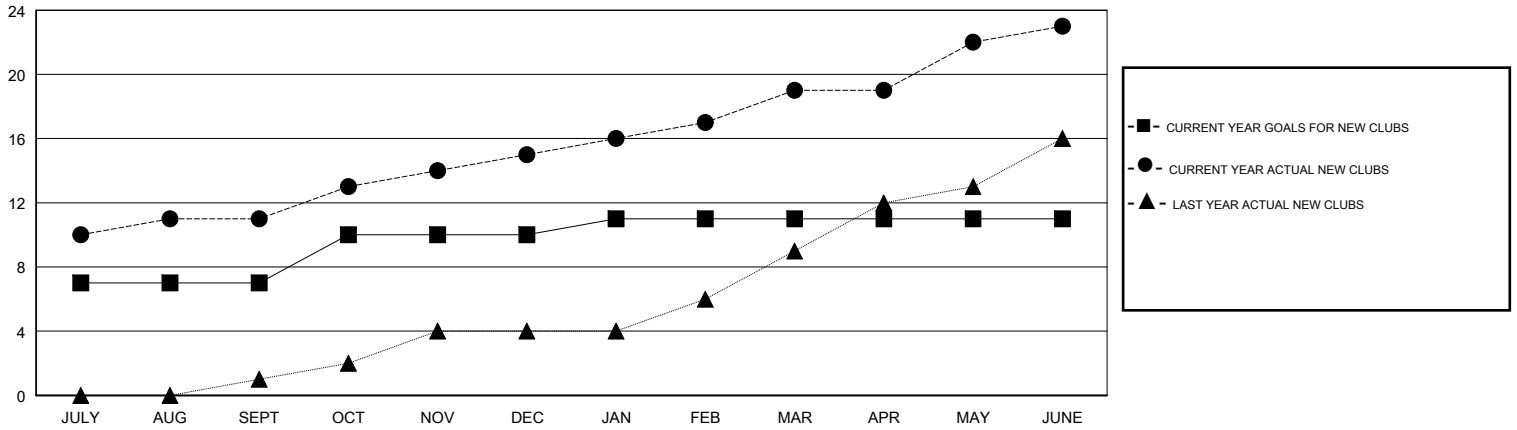
LOCATION INDIA

GMT CA

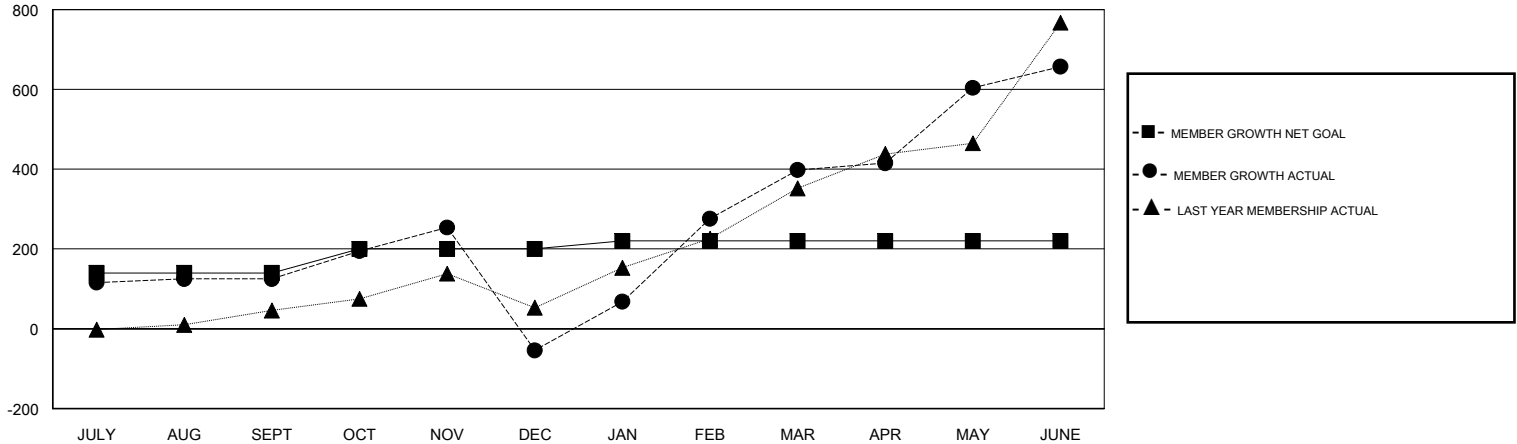
Clubs			
RESULTS FOR 2017-2018			
QUARTER	NEW CLUB GOAL	NEW CLUBS	DROPPED CLUBS
JULY/AUG/SEPT	7	11	0
OCT/NOV/DEC	3	4	11
JAN/FEB/MAR	1	4	1
APR/MAY/JUNE	0	4	1

Members			
RESULTS FOR 2017-2018			
QUARTER	MEMBER GROWTH NET GOAL	MEMBER GROWTH ACTUAL	DROPPED MEMBERS ACTUAL (including transfers)
JULY/AUG/SEPT	140	345	196
OCT/NOV/DEC	60	231	404
JAN/FEB/MAR	20	714	91
APR/MAY/JUNE	0	777	466

GOALS AND ACTUAL NEW CLUBS CUMULATIVE



GOALS AND ACTUAL MEMBERS CUMULATIVE



DROPPED CLUBS: 13	132 CLUBS OF 148 ADDED 1 OR MORE NEW MEMBERS	<u>GENDER DISTRIBUTION</u>			
		MALE	4,666 (80.88%)		
<u>DROPPED MEMBERS</u>		FEMALE	1,103 (19.12%)		
		Women Percentage Fiscal Year Goal: 5%			
DECEASED	18	TOTAL FAMILY UNIT MEMBERS		0	
CLUB CANCELLED	367	CLICK HERE FOR CUMULATIVE MEMBERSHIP DATA		FAMILY MEMBERS PAYING HALF DUES	0
OTHER	772				
TOTAL	1,157				